

ALL-O-MATIC®



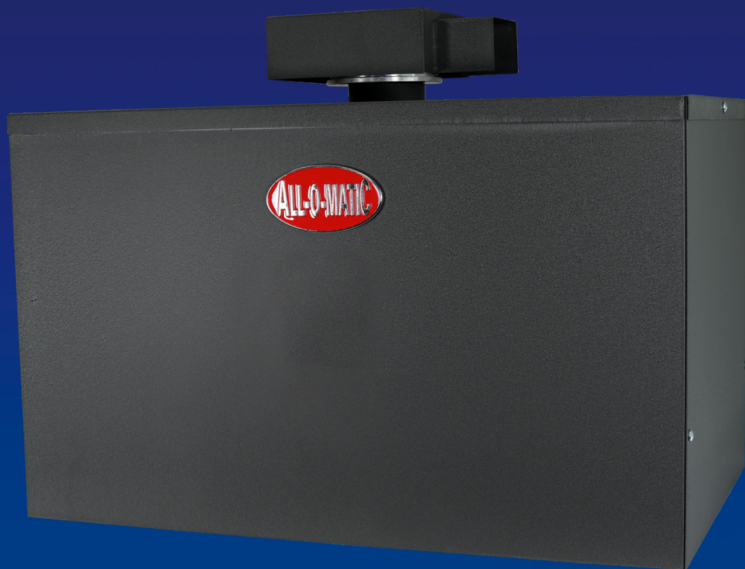
818-787-1988

allomatic.net

SW-375 DC

SWING GATE OPERATOR

Our **HEAVY DUTY DC Swing Gate Operator** designed for commercial and industrial applications.



SW-375 DC

- ✓ For Gates Up To 5,000 Lbs. and 30 Ft. Long
- ✓ Adjustable Torque Limiter
- ✓ Integrated Battery Backup
- ✓ Maintenance Free 36V Brushless DC Motor
- ✓ Control Board With Array of Features



INDUSTRIAL



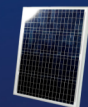
TORQUE
LIMITER



INNOVATIVE
CIRCUIT BOARD



WISE M/S
COMPATIBLE



36VDC **SOLAR**
POWER OPTION

SLIDERS | **SWINGERS** | **OVERHEADS**

The standard by which all other automatic gate operators are measured.

SCAN FOR
PRODUCT
INFORMATION



UL 325 2018
COMPLIANT

UL 991
COMPLIANT

CSA C22.2 #247



ALL-O-MATIC



818-787-1988

allomatic.net

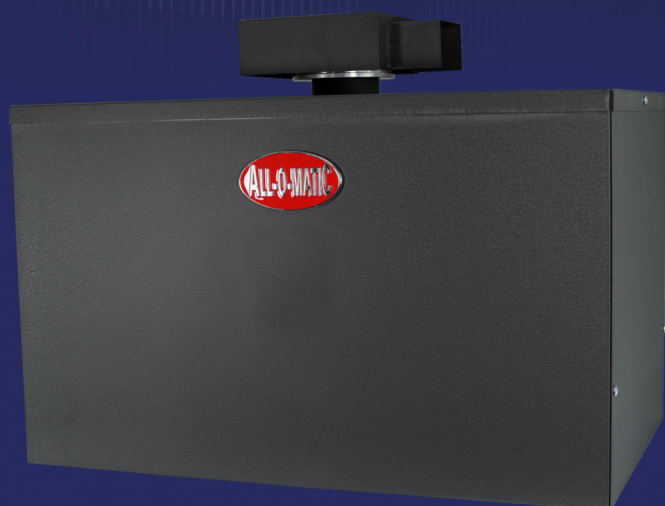
SCAN FOR
PRODUCT
INFORMATION



SPECS

SW-375 DC

SWING GATE OPERATOR



Max Gate Weight	5,000 lbs.
Max Gate Length	30 feet
Warranty	3 year commercial
Motor	36 VDC brushless motor
Gate Speed	Adjustable 14-27 seconds per 90° opening
Power Options	115/230/480 VAC single phase And 36VDC solar panel
Duty Cycle	Continuous
Battery Back Up	Integrated, with (3) 14Ah 12VDC batteries
Battery Back Up Capacity	Up to 300 cycles on a 2,000 lb. gate
Temperature Range	-40 to 160°
Gearbox Ratio	Large gearbox: 30:1 Small gearbox: 10:1
Width X Length X Height	19" x 31" x 25"
Shipping Weight	435 lbs. + 110 lbs. arm and wrench
Emergency Release	5/8" bolt to remove arm
Belt Size	4L-230 (AX21)
Main Sprocket Size	60A45X5
Chain Size	60NP
Gearbox Sprocket	Top: 60B23X1.5 Bottom: 50B18X1.125 and 50B20X7/8
Limit Shaft Sprocket	N/A
Breaker Requirement	20 amp dedicated
Gearbox Pulley	5" with 5/8" bore
Motor Pulley	2" with 5/8" bore

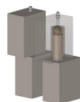


INDUSTRIAL

AVAILABLE ACCESSORIES



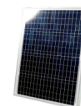
AML-1200B
Mag Lock



GH-5000
Hinges



Fire
Boxes



Solar
Panel



PRIME VD-1
Loop Detector

The Warrantor warrants the SW-375DC Gate Operator. ALL-O-MATIC INC warrants its gate openers for a period of five (3) years in commercial installation to be free from defects in circuitry, motor, gear box and workmanship. This warranty applies from the date of purchase to the original owner. Warrantor will repair or, at its option, replace any device which it finds to require service. This device must be sent to the warrantor at the consumer's expense. The warrantor will return the repaired or replaced unit to the customer at the consumer's expense. Labor charges for dealer service or replacement are the responsibility of the owner. These warranties are in lieu of all other warranties either expressed or implied, and ALL-O-MATIC INC shall not be liable for consequential damage. All implied warranties of merchantability and or fitness for a particular purpose are hereby disclaimed and excluded. This limitation is not valid in jurisdictions which do not allow limitation of incidental or consequential damages or limitation of warranty periods. Caution in order to obtain this policy, please complete the registration card and send it by mail within 30 days of purchasing from ALL-O-MATIC INC. or your INSTALLER. If not registered only a one year warranty on all parts will be provided.

SLIDERS | SWINGERS | OVERHEADS

The standard by which all other automatic gate operators are measured.

UL 325 2018
COMPLIANT

UL 991
COMPLIANT

CSA C22.2 #247

