



Bolt-on U-shaped earplate with Quick-Fix

BOLTON-U-

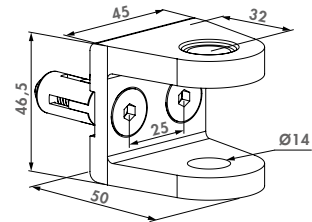
Fix easily and firmly the U-shaped earplate to the fix post with 2 Quick-Fix. Compatible with GBMU, GBMU4D and BOLTONHD-4D.

Color options

ALUM 6005 7016 9005

Specifications

- ✓ U-shaped earplate in aluminium
- ✓ Perfect combination with BOLTONHD-G-QF
- ✓ No welding required: drill holes and fix with Quick-Fix



Order codes

BOLTON-U-16-QF

BOLTON-U-12-QF

U-shaped earplate with Quick-Fix



Bolt-on GRIP in aluminium

BOLTON-P-

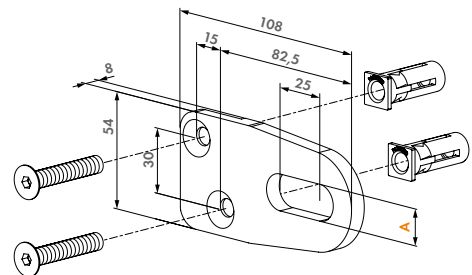
The aluminium GRIP is attached quickly, easily and firmly to the back of the gate profile with 2 Quick-Fix bolts. Using the Bolton-P allows you to prepare one gate for both left and right gates. This GRIP is a perfect fit for lighter gates, such as garden gates for example. Compatible with BOLTON-U earplate.

Color options

ALUM 6005 7016 9005

Specifications

- ✓ Packed per pair
- ✓ Max width of the gate: 1500 mm (M12)
- ✓ Max weight of the gate: 50 kg (M12)
- ✓ Max width of the gate: 2000 mm (M16)
- ✓ Max weight of the gate: 75 kg (M16)



Order codes

BOLTON-P-12-QF

BOLTON-P-16-QF

A

13 mm

17 mm



Bolt-on GRIP

BOLTONHD-G- (Patented)

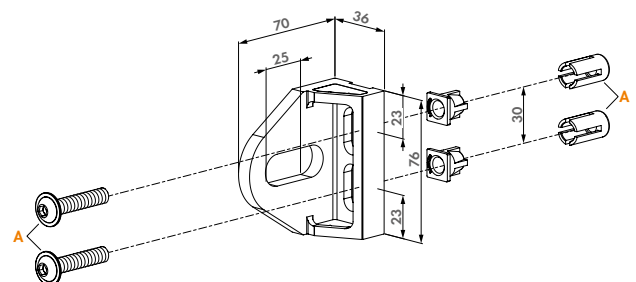
The GRIP is attached quickly, easily and firmly to the fixed post with 2 Quick-Fix bolts or with internal threaded bushing fastening. Compatible with GBMU, GBMU4D and BOLTONHD-4D.

Color options

ALUM 6005 7016 9005

Specifications

- ✓ GRIP in aluminium
- ✓ No welding required: drill holes and fix with Quick-Fix
- ✓ The 40-60 version can be applied to tubes of 40 up to 60 mm



Order codes

BOLTONHD-G-16-QF

A

Quick-Fix